

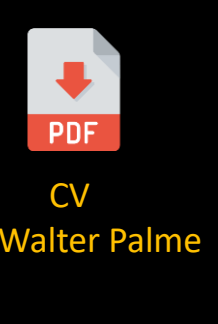
## HUMANITARIAN PROGRAM OF INFRASTRUCTURE PROJECTS FOR THE SUSTAINABLE DEVELOPMENT OF PROSPERITY

### WHY? THE PURPOSE

- The Humanitarian Program presented below has a generic format and is a living and dynamic document that addresses themes that must be present and operative in any geography and culture, respecting possible cultural particularities. Other themes may be included, as is the case of Education. A basic structure is presented here that can be modified and adapted according to local needs and particularities;
- It is also important to mention that the Program is based on free initiative encouraging and focusing on local structures (municipalities, districts, watersheds, etc.) generating economic and social activities and real and necessary benefits for millions of people. Starting from the Natural Laws (Principles and Truth) in Love, Knowledge, Integrity/Honesty, Transparency, Sovereignty, Freedom, which finally allow the manifestation of Order and Progress. This is the backbone that guarantees the success of the Program's application. The positive cycle of the Expression of Natural Laws;
- Most countries and regions in Latin America (and other parts of the world) continue to have problems of lack of adequate infrastructure for development, especially sustainable development. For the most part, these are STATE problems that governments are unable to solve;
- The time has come to recover these areas, regions or countries by installing the necessary infrastructures and development, promoting local businesses, cooperatives, etc. The INOVOH Humanitarian Program of Infrastructure Projects is an initiative that comes to correct and recover the course of these Regions, providing real solutions, and putting them in their just and deserved place, for millions of beneficiaries;
- An innovative PROGRAM based on Projects and a tailor-made Management Model with internationally validated technologies, with local partnerships, and structured to provide the necessary SOLUTIONS.

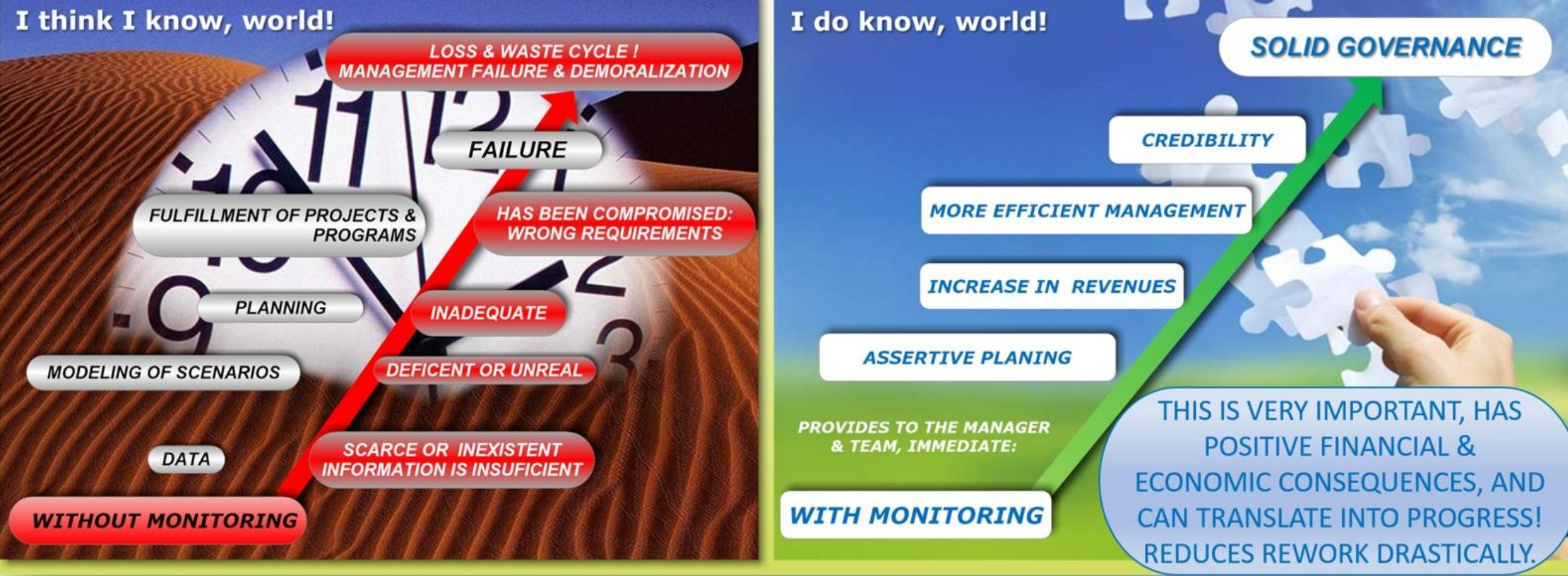
### THE PROGRAM

- ✓ It simultaneously addresses the following Thematic Themes from Projects Integrated by the Program: Territorial Management, Housing - Sustainable Communities (including Native Peoples) and Housing Adequacy, Food Security, Sanitation and Environment, Health Care, Clean Energy, Infrastructure and Logistics;
- ✓ The Thematic Themes are therefore developed simultaneously through a Management Model that focuses on the sustainable development of prosperity at the local municipal/district, and regional levels; all Municipalities and Departments. It can be a Country Level Program.
- ✓ It is under the responsibility of Eng. Ulf Walter Palme - Designer and Manager - [www.ulfwalter.com](http://www.ulfwalter.com) who created the Program and is based on professional merit, and counts on a multidisciplinary team selected, for now, from more than 100 professionals and 50 companies with national and international recognition that support the initiative;
- ✓ Complies with the international guidelines of the Project Management Institute (PMI), with planned Project Management Offices (PMO), all Owner's Engineering and even a permanent inspection/audit/auditory/auditing structure;
- ✓ Complies with the international guidelines of the Project Management Institute (PMI), with planned Project Management Offices (PMO), all Owner's Engineering and even a permanent inspection/audit/auditory/auditing structure.
- ✓ Projects are structured in the form of PROJECT PLANS with the following structure: Project Description; Project Area, Justification and Problems to be Addressed; Market & Marketing Plan; The Project (Services / Products / Structure); The Management Team, Technologies and Partners; Relationship / Linkage with Public Policies; Sector Characteristics and Stakeholders; Crosscutting Issues; Projections; Project Replication; Risks, Problems and Assumptions; Project Scheduling, Monitoring and Auditing; Finances; Financial Sustainability; Conclusions. PROJECT PLAN represents a level of greater detail than an Executive Summary, not yet as complete as the Executive Project, which is done once the financial resources are available and the PROGRAM is initiated. Still extensive and intense works were performed, choosing technologies and methodologies that generate clear benefits to the whole population and that are faster, of high quality and mostly of lower costs.
- ✓ It is a wide-ranging PROGRAM that generates solutions to issues that the region, country, urgently needs to solve!
- ✓ The PROGRAM generates direct and indirect jobs with the establishment of Industries, Businesses and Services;
- ✓ The PROGRAM period initially considered is 8 years;
- ✓ The PROGRAM is a MODEL and can be replicated throughout Latin America and Africa with the necessary local adaptations.



The figure below represents, in my experience, one of the most valuable lessons on the importance and consequences of Land Management and Planning and its positive (or failing that, negative) impact on people's daily lives. I built this figure from the Waste and Loss Cycle. And to generate positive impacts on society, it presupposes honest and transparent attitudes. I was able to test, prove and validate the assertive functionality of Territorial Management (Territorial Reference and its Dynamics), and its environmental, social, economic and administrative benefits. in different themes, geographies and cultures. It portrays the real crisis of today: doing things the right way and rejecting the wrong way!

### IMPORTANCE OF MONITORING TERRITORIAL DYNAMICS FOR SUSTAINABLE MANAGEMENT & BUSINESSES - ENVIRONMENTAL, SOCIAL, ADMINISTRATIVE & FINANCIAL -



Through Territorial Reference and Monitoring, the Region (at all levels of Public and Private Governance) will be favored in the evaluation of certain Planning Strategies.  
Breaking Paradigms to Promote Sustainable Development with Validated Management Strategies.

## PROJECTS



#### TERRITORIAL MANAGEMENT

- ✓ Plan Altimetric Mapping - with 5-10 cm laser altimetry (LIDAR) and 10-20 cm resolution ortho imagery;
- ✓ Land Use Classification and Watershed Determination (up to 3rd order) - Land Use Planning of all Municipalities / Districts, Master Plan, Sustainable Development;
- ✓ Creation/Assembly of a Multifinality Cadastre of the beneficiaries of the PROGRAM;
- ✓ Annual Territorial Monitoring of the necessary areas;
- ✓ Installation of the Territorial and Construction Management Center - CGTEC;
- ✓ Installation of a Model Neighborhood with all technologies at the headquarters, next to the CGTEC;
- ✓ Aerial Combat of Forest Fires, Humanitarian Aerial Operations during Floods or when necessary.



#### HOUSING IN SUSTAINABLE NEIGHBORHOODS / COMMUNITIES

- ✓ Reduction / eradication of the housing deficit in the country, especially the social deficit;
- ✓ Construction of housing with infrastructure in Metropolitan Areas - MA; complete Community concept in neighborhoods of 2,000 to 5,000 homes in sustainable urbanism;
- ✓ Construction of housing with infrastructure in the Interior, concept of Complete Community in neighborhoods of 500 to 5,000 homes in sustainable urbanism;
- ✓ Construction of housing for Native Peoples with culturally appropriate architecture;
- ✓ High quality, faster and lower cost construction method.

#### RENOVATION, REFURBISHMENT AND COMPLETION OF SHELTER HOUSES INTO CLEAN AND BEAUTIFUL HOMES

- Structural issues of housing and home infrastructure.
- ✓ Families of Metropolitan Areas - MA;
  - ✓ Families from the Urban Interior of the Country;
  - ✓ Rural Families from the Interior of the Country.



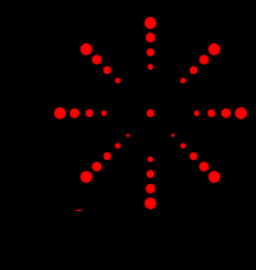
#### FOOD SAFETY

- ✓ Install infrastructure and equipment for the agribusiness production chain according to local needs. As an example we mention: strengthening with commercial orchard, management and production of pastures and implanted crops, fruit and vegetable products processing plant with means of transport, poultry, pig and cattle feed processing plant, poultry breeding center, poultry products processing plant, with means of transportation, on-farm milking shed, milk processing plant with means of transportation, pig breeding center, meat and pork products processing plant with means of transportation, community supermarkets, nutritional food distribution center, factory of related activities and by-products, etc.
- ✓ High-performance technical schools with computer equipment and library;
- ✓ Community recreation centers for adults and children;
- ✓ Campesino Health Care Units and Centers - ambulance with intensive care unit;
- ✓ Construction of Housing for Farmers;
- ✓ Installation of artesian wells;
- ✓ Training in various topics of interest to meet local demands;
- ✓ Infrastructure for Volunteer Firefighters;
- ✓ Significantly reduce food loss and waste in the food chain, ensuring the supply of nutritious food to the entire population, especially children;
- ✓ The investments made in farms such as chicken coops, pigsties, greenhouses, agricultural crops, reforestation may generate income for the beneficiaries of these activities with the provision of raw materials for community industries, once processed and marketed, the profits generated will be reinvested in the population in road maintenance, health and education, all activities will be carried out with a cooperative approach where the main actors will be the most needy population.



#### SANITATION AND ENVIRONMENT

- ✓ Civil Works to avoid Pluvial Floods;
- ✓ Install Storm Drainage and Sewerage for Metropolitan Areas - MA;
- ✓ Install Storm Drainage and Sewerage for Inland Municipalities/Districts;
- ✓ Waste Recycling and energy generation in the Circular Economy concept;
- ✓ Promote Environmental Health together with the communities.



#### WELLNESS AND HEALTH

- ✓ METROPOLITAN AREAS and INTERIOR OF THE COUNTRY. Install Health Care Network / Social Capillarity Health Network with University Social Hospitals (HSU) (24/7) each with 150 beds + 50 UTIs, 6 UTI Ambulances and 1 Ambulance Helicopter; Health Centers (Regional Hospitals) (24/7) each with 50 beds + 20 UTIs, 4 Ambulances with UTI; Joint Basic Health Units (UBS) and First Aid Units (UPA) and 1 UTI Ambulance (24/7). Fleet of Ambulance Helicopters. Provide affordable access to every citizen in any Municipality/District of the country; install hospitalization beds, observation beds, stabilization beds, ICU beds, red rooms, etc.;
- ✓ Providing Quality Medical Education through the University Hospitals;
- ✓ Install new technologies that generate broad benefits to the population.



#### CLEAN ENERGIES

- ✓ Installation, / Retrofitting of High Voltage 500 kV Transmission Lines and Electric Power Distribution - High, Medium and Low Voltage, especially for rural areas to support the Agricultural Production Chain and the Health Care Network;
- ✓ Installation of SHP and other alternative forms of Energy when necessary, such as Biogas, Photovoltaic, Electromagnetic and Geothermal;
- ✓ Ensure access to electric energy to all citizens and for the infrastructure of the Program's Projects and development of the Country.



#### TRANSPORTATION AND LOGISTICS INFRASTRUCTURE

- ✓ Construction, Rehabilitation and Paving of Roads including Bridges and Works of Art, especially for the production areas of the Agricultural and Livestock Chain;
- ✓ Railroads & Ports of importance for the sustainability of the communities especially rural, assuring the necessary Infrastructure Logistics for the Projects of the PROGRAM and development of the Country.
- ✓ Other topics of interest.